

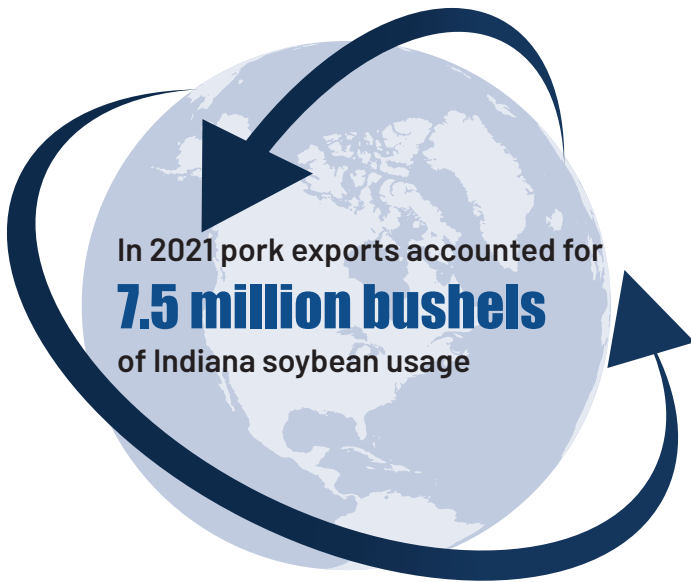


EXPORTING INDIANA SOYBEANS THROUGH U.S. PORK



In 2021 the market value of pork exports to **Indiana Soybeans = \$98.6 million**
(soybeans consumed by pork exports at average annual soybean price)
 7.5 million bushels x \$13.13 per bushel

For the estimated total economic impact:
 In 2021 pork exports contributed **12.6% of bushel value = \$1.65**
 at an average price of \$13.13 per bushel



U.S. pork exports contributed **\$98.18 per Indiana soybean acre**
 at \$1.65/bushel at a yield of 59.5 bushels/acre in 2021

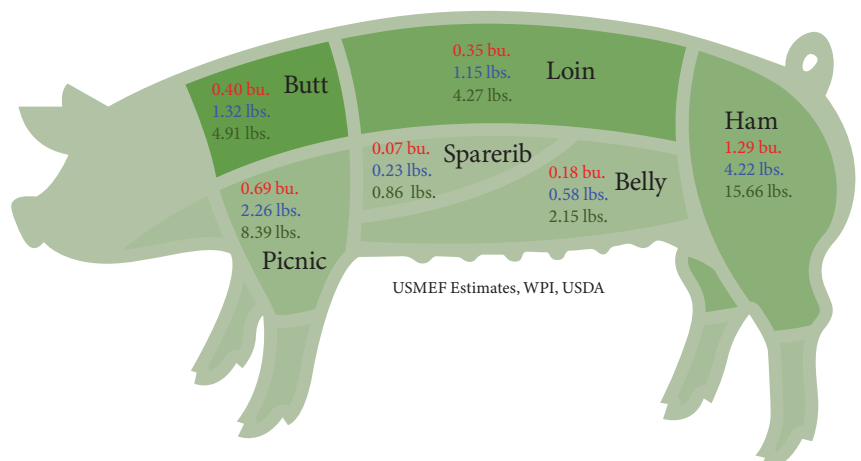
Feed Use by Cuts Exported

Per head slaughtered in 2021

Bushels of Corn

Lbs. of Dried Distillers Grains

Lbs. of Soybean Meal

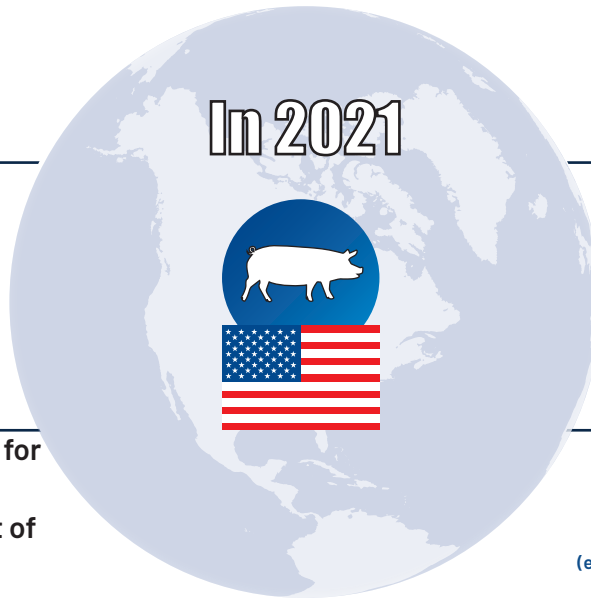




29.4%
of U.S. pork was exported,
a new record



In 2021, pork exports accounted for
2.36 million tons worth of
soybean meal use, the equivalent of
99.3 million bushels of soybeans

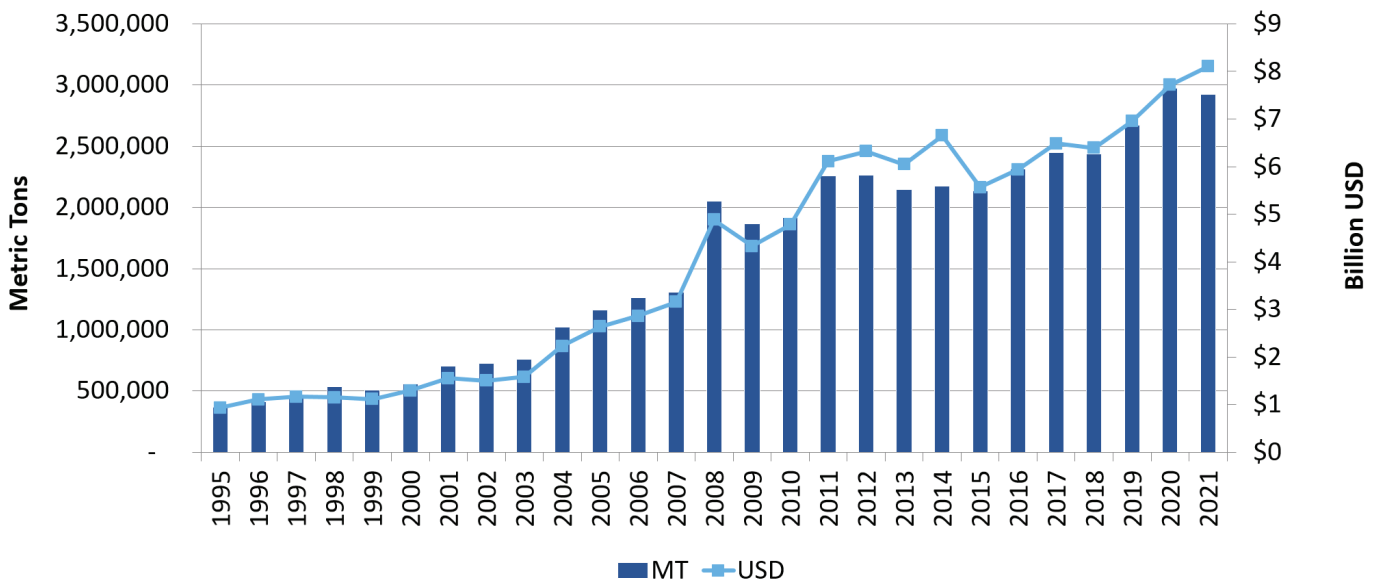


Pork exports were the
fastest growing category
of soybean meal use from 2015-2021



Pork export value equated to
\$62.86 per head slaughtered,
a new record
(export value divided by 2021 commercial hog slaughter)

U.S. Pork & Variety Meat Exports



Source: USDA/FAS

"The soybean industry has been a solid partner in developing international markets for U.S. pork," says USMEF Senior Vice President of Industry Relations John Hinners.
"This support is critical to the export growth the pork industry has achieved."



WORLD PERSPECTIVES
AT THE BRIDGE OF POLICY & MARKETS
Dave Juday
dave@thejudaygroup.com

The U.S. Meat Export Federation (USMEF) is a non-profit trade association that works to create new opportunities and develop existing international markets for U.S. beef, pork and lamb. USMEF is a unique collaboration of nine distinct segments of American agriculture, joining together to implement successful marketing programs for U.S. pork, beef and lamb around the world.

U.S. Meat Export Federation
1660 Lincoln Street, Suite 2800
Denver, CO 80264
Tel 303.623.MEAT (6328)
Fax 303.623.0297
www.usmef.org



For more information about this independent study conducted by World Perspectives, contact John Hinners, Erin Borrer, Jessica Spreitzer or Dave Juday.